

England's Stove Works, Inc.

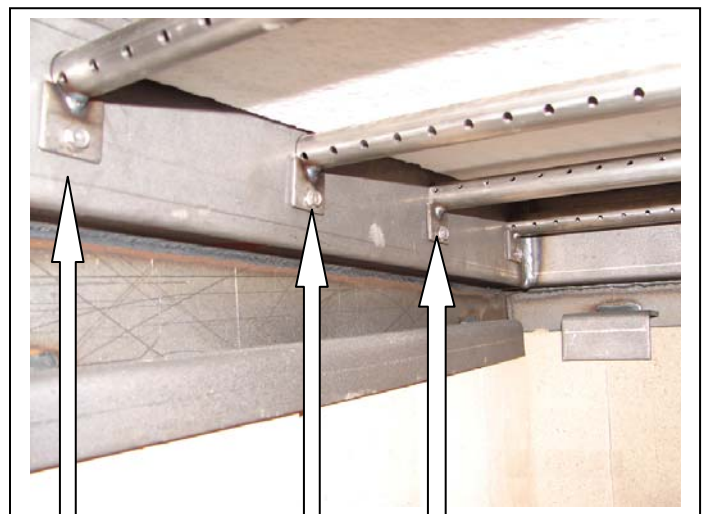
Pellet Stoves
Corn Stoves
Gas Stoves
Wood Stoves

P.O. Box 206 Monroe, VA 24574 www.englishstoves.com Phone: (800) 516-3636 Fax: (434) 929-4810

Installing ceramic fiber board And/or replacing burner tube(s) In units with "30" in model number

**WARNING: STOVE MUST BE OUT (NO FIRE), AND COOLED DOWN BEFORE PROCEEDING.
ALWAYS FOLLOW ALL CODES.**

1. Open the front door of the stove.
2. Locate the four burner tubes inside the stove, at the top of the firebox (Ill. 1). Locate the 5/16" screws at the left-hand end of the tubes (Ill. 1). Remove *only the screws for burner tubes 1, 2 and 3* (with tube 1 being the front burner tube, closest to the front door of the stove).
3. Once the screws for burner tubes 1, 2 and 3 are removed, slide each tube to the right and let it drop down (Ill. 2). Then slide each tube to the left to remove it from the stove.



Remove only the screws for tubes 1, 2 and 3
Ill. 1

- IMPORTANT:** Take note of which tube belongs in each position (i.e. tubes 1, 2 and 3), as each tube is different.
4. Remove the ceramic fiber boards from the stove.
 5. Install the new fiber boards by placing them on top of the rear tube (Ill. 2). Reinstall burner tube 3 (be sure to install the tube that was originally in the hole 3 position, refer to the diagram on the rear of this sheet if necessary). Next, reinstall burner tube 2. Finally, reinstall the front burner tube.



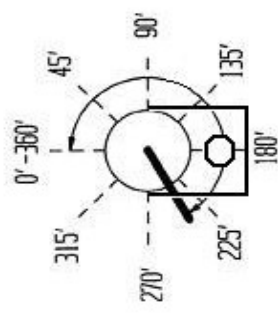
Ill. 2

NOTE: If you are only replacing burner tube(s) (not the fiber board), refer to Step 2 for instructions on removing whichever tube/tubes you are replacing.

(Burner tube placement diagram is on rear of this sheet)

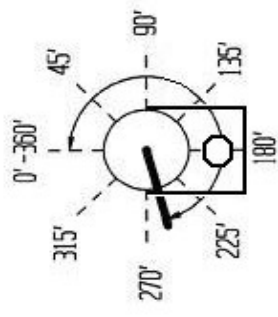
Front (Door Side)
← of Unit

' = "degrees"



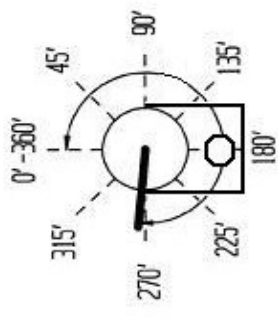
1st TUBE
Holes
HOLES FACE .1875, 3/16
240 DEGREES

AC-30BT1
Front Burner
Tube



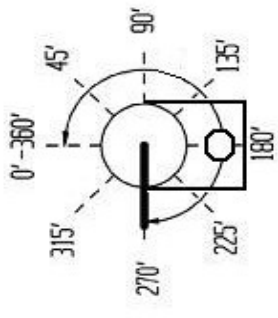
2nd TUBE
Holes
HOLES FACE .1875, 3/16
255 DEGREES

AC-30BT2
2nd Tube



3rd TUBE
Holes
HOLES FACE .1625, 5/32
275 DEGREES

AC-30BT3
3rd Tube



4th TUBE
Holes
HOLES FACE .1625, 5/32
270 DEGREES

AC-30BT4
Rear Burner
Tube

(SIDE VIEW OF TUBES)

Placement of Stainless Steel Air Tubes for all 30-NC, 50-SNC30 and 50-TNC30 stove models.